

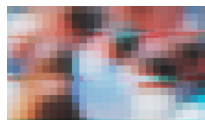
GDPR



GENERAL
DATA PROTECTION
REGULATION



- Dedicated AI Deep Learning Module for GDPR compliance in Video Surveillance and Video Processing Applications for Security
- Real-time running or forensic mode
- ONVIF compliant - able to connect to any ONVIF camera
- Run as SERVICE mode under 3rd party VMS or CMS apps



SeVA

**GDPR COMPLIANCE MODULE FOR VIDEO SURVEILLANCE
AND VIDEO PROCESSING APPLICATIONS IN SECURITY**

Actual CCTV systems: shift from Analog to IP = shift from low resolution (4 CIF) to High resolution (Full HD is the standard, already 4K present).
As a consequence, people's privacy might be infringed.



Analog Camera
versus
IP Camera



**DATA
PROTECTION
OFFICER**



**PERSONAL
DATA**



**25 MAY
2018**



**DATA
BREACHES**



COMPLIANCE

SeVA

Intelligent processing module, based on Deep Learning AI Video Analytics Algorithms, dedicated to anonymize video data in CCTV systems.



Features:

- High accuracy person & face detection
- Blur only the faces in ROI - Region of Interest (e.g. blurring faces in public area and not blurring faces in private area monitored by the same camera)
- Able to process data from any video IP source (cameras, encoders, video streams from DVRs) in ONVIF standard format
- Real time processing: <1 sec delays between direct stream and processed stream
- Available for "forensic" running mode - processing recorded data for export purpose or for 3rd party data dissemination without any GDPR breach
- For the processed stream - irreversible removal of all the features that could lead to unwilling identification
- Keep intact your Security System and procedures and elevate this to the level of "GDPR compliant" - no need to change business model and business operational scenarios

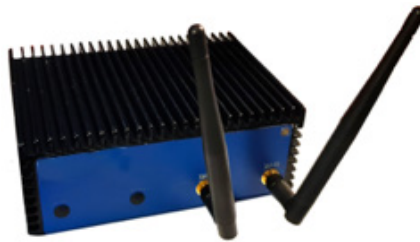
Applications:

- Banking
- Retail
- Industrial areas (perimeter security)
- Utilities providers
- Private transportation
- Offices
- Restaurants/malls

Models:

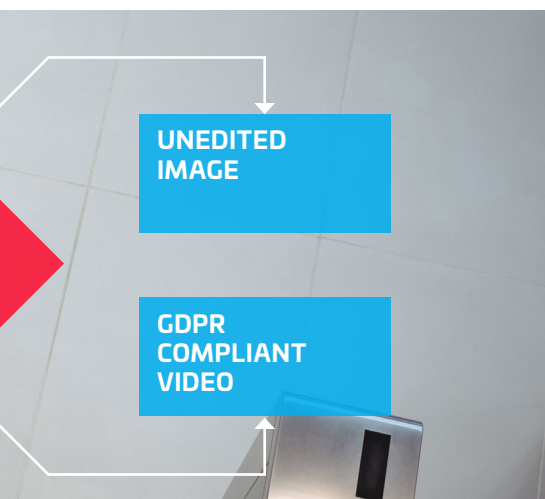
Mini - SeVA

- 1-4 simultaneous video sources
- Deep Learning AI face detection & blurring
- Video input: ONVIF compliant
- Output: real-time, virtual ONVIF camera
- 3rd party VMS or CMS compatibility



SeVA

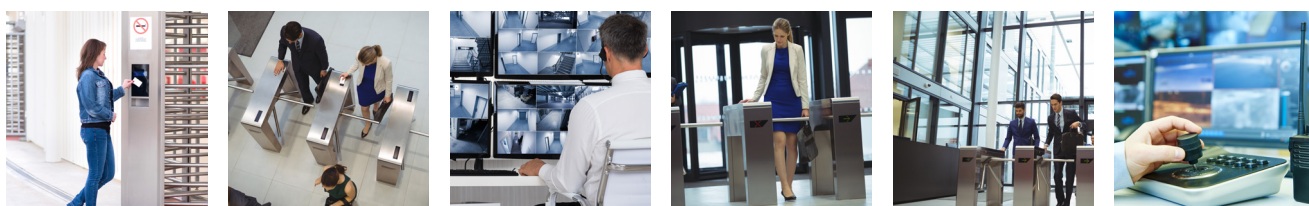
- 4-16 simultaneous video sources
- Deep Learning AI face detection & blurring
- Video input: ONVIF compliant
- Output: real-time, virtual ONVIF camera
- Recording & playback options
- 3rd party VMS or CMS compatibility



GDPR



GENERAL
DATA PROTECTION
REGULATION



softrust

Softrust Vision Analytics S.A.

Address: 107 A Oltenitei Avenue, Bucharest 4

Phone: 021 20 12 300

E-mail: office@softrust.ro

Web: www.softrust.ro

© 2019 softrust. All rights reserved.